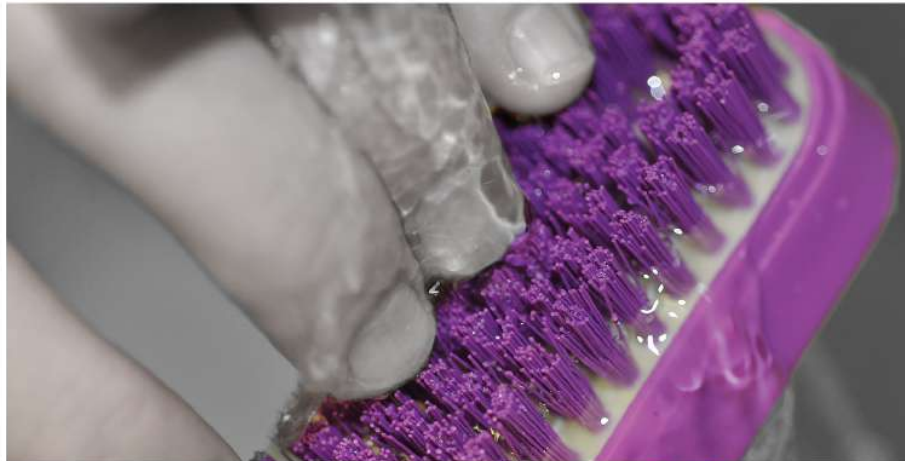




# NEW ZEALAND BRUSH CO

INNOVATIVE BRUSHWARE SINCE 1886

## The Hygiene Range



# 0800 692 787

[www.nzbrush.co.nz](http://www.nzbrush.co.nz)



NZ Brush are exclusive agents for the Hillbrush hygiene range in NZ

Hill Brush was established in 1922 by brothers, Fred and Bill Coward. Hill Brush Hygiene is an internationally renowned brand, responsible for pioneering technologies including Resin-Set DRS® Brushware, Total MDX and Anti-Microbial Hygienic Tools™.



European Commission Regulation (EC)

Hillbrush Hygiene Technology products comply with the requirements of the European Commission Regulation 1935/2004/EC (Framework Regulation). Regulation 2002/72/EC. Regulation 2023/2006 and Regulation 10/2011/EC and subsequent amendments, and updates. **Under Regulation 10/2011/EC Materials intended to come into contact with foodstuffs are not allowed to transfer toxic substances via migration when in contact with food.** Hillbrush Hygiene Technology products are specifically designed for the food industry, and are 100% compliant with this requirement. All our products have been tested by a certified laboratory, furnishing documentation that our products are complying with the migration limits laid down by EU legislation, set up under regulation 10/2001/EC.



FDA (Food and Drug Administration in the USA)

All Hillbrush Hygiene Technology products are made using FDA Approved raw materials. Code of Federal Regulations

21 CFR 177.1520  
21 CFR 176.170  
21 CFR 177.1660  
21 CFR 177.1500

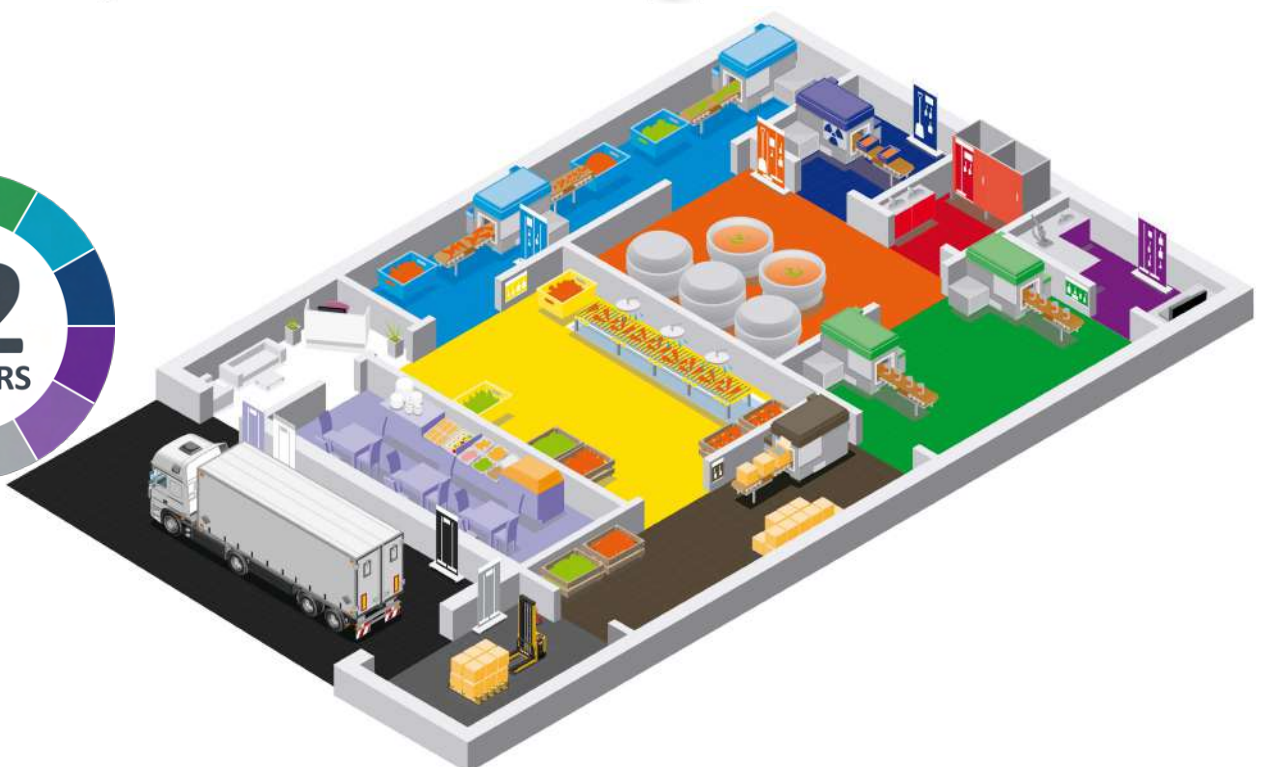


## Key to Symbols

	Autoclavable
	Trim Length
	Temperature Tolerance
	Polypropylene Body
	Nylon Body
	Polyester Fill
	Aluminium Body
	Thermoplastic Rubber Body
	Stainless Steel Body
	Polyethylene
	Metal Detectable
	Metal & X - Ray Detectable
	Peek Fill

## Colour Codes

	= Grey
	= Pink
	= Green
	= Blue
	= Red
	= White
	= Yellow
	= Orange
	= Purple
	= Black
	= Brown





# Contents



<b>Hillbrush Professional</b>	<b>5-21</b>
Shadowboards	18-19
<b>Custom Made Tube Brushes</b>	<b>22</b>
<b>Resin Set</b>	<b>23-25</b>
<b>Anti-Microbial</b>	<b>26-28</b>
<b>Metal Detectable</b>	<b>29-38</b>
<b>Disposable PPE</b>	<b>39-43</b>
<b>Mop</b>	<b>44-45</b>
<b>Washdown Equipment</b>	<b>46</b>
<b>Cutting Boards and Knives</b>	<b>47-48</b>
<b>Custom Made Items</b>	<b>49</b>
<b>Scrubber and Sweeper Brushes</b>	<b>50</b>
<b>Household Brushware</b>	<b>51-53</b>
<b>Chemicals and Aerosols</b>	<b>54-55</b>
<b>Non-Certified Range</b>	<b>56-57</b>
<b>Resistance Guide</b>	<b>58-59</b>



The company has kept its local ownership and has become a highly successful firm based in Dunedin over 125 years after the settlement of Alfred Carter Broad (AC). His inherited skills have remained, providing employment for the people of Dunedin and supply of quality brushware for industry and commercial use throughout New Zealand.

We are renowned for our:

- Quality Brushware
- Easy Online Purchasing
- Custom Design Option
- Fast Turnaround

Select from a wide range of products, whether you need an engine cleaning brush or a baby bottle brush, you have come to the right place. Our service is unique, in that we can make a single special brush for you, or we can mass-produce a custom design. The NZ Brush Co. has a long tradition of making special brushes for special and unusual applications.



No order is too big or too small! Where necessary, we may be able to produce a sample at no cost to you, in order to ensure our finished product exactly matches your brush requirements.

We have the skills necessary to help you with your custom-made brush designs and to advise you on the best options available. More recently we have diversified our product range to include safety equipment and tools, including, safety gear, shovels, spades, rakes and our new hygiene range.

**WE CAN MAKE CUSTOM MADE  
BRUSHES THAT SUIT YOUR NEEDS**





### Floor Broom

Soft Fill  
500mm  
H124

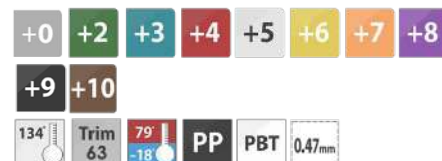


Food Safety Documentation Available:  
www.hillbrush.com Using Keyword: B1760



### Floor Broom

Medium Fill  
500mm  
H125



Food Safety Documentation Available:  
www.hillbrush.com Using Keyword: B1657



### Floor Broom

Stiff Fill  
500mm  
H127



Food Safety Documentation Available:  
www.hillbrush.com. Using Keyword: B1786



### Yard Broom

Stiff Fill  
300mm  
H123



Food Safety Documentation Available:  
www.hillbrush.com Using Keyword: B757



### Floor Broom

Soft Fill  
390mm  
H133



Food Safety Documentation Available:  
www.hillbrush.com. Using Keyword: B1082



### Floor Broom

Stiff Fill  
390mm  
H134

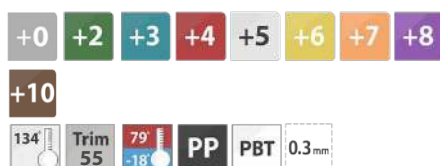


Food Safety Documentation Available:  
www.hillbrush.com. Using Keyword: B1083



### Floor Broom

Soft Fill  
280mm  
H130

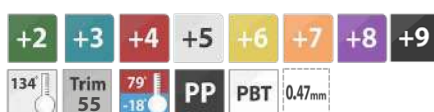


Food Safety Documentation Available:  
www.hillbrush.com. Using Keyword: B1731



### Floor Broom

Medium Fill  
280mm  
H131



Food Safety Documentation Available:  
www.hillbrush.com. Using Keyword: B1732



### Floor Broom

Stiff Fill  
280mm  
H132



Food Safety Documentation Available:  
www.hillbrush.com. Using Keyword: B1733



### Deck Scrub

Stiff Fill  
305mm  
H118



Food Safety Documentation Available:  
[www.hillbrush.com](http://www.hillbrush.com) Using Keyword: B770



### Deck Scrub

Extra Stiff Fill  
305mm  
H119



Food Safety Documentation Available:  
[www.hillbrush.com](http://www.hillbrush.com) Using Keyword: B759



### Deck Scrub

Extra Stiff Fill  
230mm  
H120



Food Safety Documentation Available:  
[www.hillbrush.com](http://www.hillbrush.com) Using Keyword: B928



### Deck Scrub

Stiff Fill  
280mm  
H138



Food Safety Documentation Available:  
[www.hillbrush.com](http://www.hillbrush.com) Using Keyword: B1745



### Deck Scrub High/Low

Medium Fill  
260mm  
H117



Food Safety Documentation Available:  
[www.hillbrush.com](http://www.hillbrush.com) Using Keyword: B1783



### Tank Brush

Stiff Fill  
216mm  
H121



Food Safety Documentation Available:  
[www.hillbrush.com](http://www.hillbrush.com) Using Keyword: D79



### Pad Holder Floor

230 x 100mm  
H355



Food Safety Documentation Available  
From New Zealand Brush Co Using  
Ref #27101



### Scour Pads For Pad Holder

255 x 115 x 25mm  
L740





### Hand Brush Short Handle

Stiff Fill  
254mm  
H102

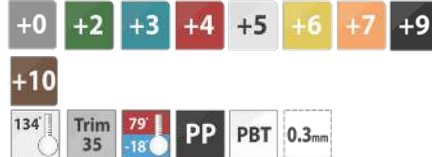


Food Safety Documentation Available:  
[www.hillbrush.com](http://www.hillbrush.com). Using Keyword: D4



### Hand Brush Short Handle

Medium Crimped Fill  
254mm  
H103



Food Safety Documentation Available:  
[www.hillbrush.com](http://www.hillbrush.com). Using Keyword: D7



### Hand Brush Short Handle

Soft Crimped Fill  
254mm  
H104



Food Safety Documentation Available:  
[www.hillbrush.com](http://www.hillbrush.com). Using Keyword: D5



### Hand Brush Long Handle

Stiff Fill  
406mm  
H105



Food Safety Documentation Available:  
[www.hillbrush.com](http://www.hillbrush.com). Using Keyword: D9



### Hand Brush Long Handle

Soft Crimped Fill  
406mm  
H107



Food Safety Documentation Available:  
[www.hillbrush.com](http://www.hillbrush.com) Using Keyword: D10



### Hand Brush Long Handle

Heat Resistant Bristle  
For Hot Surfaces Up To 250°C  
Stiff Fill  
406mm  
H129



Food Safety Documentation Available:  
[www.hillbrush.com](http://www.hillbrush.com). Using Keyword: D9-PEEK



### Hand Brush Utility

Medium Fill  
260mm  
H116

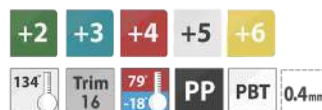


Food Safety Documentation Available:  
[www.hillbrush.com](http://www.hillbrush.com). Using Keyword: B884



### Hand Brush Narrow Detail

Stiff Fill  
225mm  
H141



Food Safety Documentation Available:  
[www.hillbrush.com](http://www.hillbrush.com). Using Keyword: B1606



### Hand Brush Iron Handle Stiff

Stiff Fill  
152mm  
H108



Food Safety Documentation Available:  
[www.hillbrush.com](http://www.hillbrush.com). Using Keyword: ST8





### Dish Wash Brush

Medium Fill  
270mm  
H115



Food Safety Documentation Available:  
[www.hillbrush.com](http://www.hillbrush.com). Using Keyword: DW1090



### Fold Brush

Medium Fill  
180mm  
H113



Food Safety Documentation Available:  
[www.hillbrush.com](http://www.hillbrush.com). Using Keyword: B1241



### Fold Brush

Stainless Steel  
180mm  
H114



Food Safety Documentation Available:  
[www.hillbrush.com](http://www.hillbrush.com). Using Keyword: B1240



### Hand Scrub Curved Back

Stiff Fill  
198mm  
H110



Food Safety Documentation Available:  
[www.hillbrush.com](http://www.hillbrush.com). Using Keyword: ST7



### Hand Scrub Round

Stiff Fill  
100mm  
H111



Food Safety Documentation Available:  
[www.hillbrush.com](http://www.hillbrush.com). Using Keyword: ST9



### Nail Brush

Stiff Fill  
122mm  
H112



Food Safety Documentation Available:  
[www.hillbrush.com](http://www.hillbrush.com). Using Keyword: NA4



### Hand Scrub Double Wing Dual

Stiff Fill  
210mm  
H109



Food Safety Documentation Available:  
[www.hillbrush.com](http://www.hillbrush.com). Using Keyword: ST5



### Grout Scrub with Swivel Connector

Extra Stiff Fill  
240mm  
H122



Food Safety Documentation Available:  
[www.hillbrush.com](http://www.hillbrush.com) Using Keyword: ST11



**Dustpan**  
Open Plastic  
325mm  
H331



Food Safety Documentation Available:  
[www.hillbrush.com](http://www.hillbrush.com). Using Keyword: DP13



**Bannister Brush**  
Soft Crimped Fill  
317mm  
H100



Food Safety Documentation Available:  
[www.hillbrush.com](http://www.hillbrush.com). Using Keyword: B866



**Bannister Brush**  
Stiff Fill  
317mm  
H101



Food Safety Documentation Available:  
[www.hillbrush.com](http://www.hillbrush.com). Using Keyword: B867







**Squeegee Hand Ultra Hygienic**  
Single Blade  
300mm  
H170



Food Safety Documentation Available:  
[www.hillbrush.com](http://www.hillbrush.com). Using Keyword: B1802



**Squeegee Ultra Hygienic (400mm)**  
Single Blade  
400mm  
H171



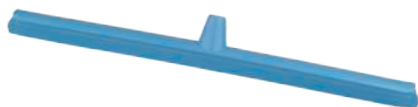
Food Safety Documentation Available:  
[www.hillbrush.com](http://www.hillbrush.com). Using Keyword: PLSB40



**Squeegee Ultra Hygienic (600mm)**  
Single Blade  
600mm  
H173



Food Safety Documentation Available:  
[www.hillbrush.com](http://www.hillbrush.com). Using Keyword: PLSB60



**Squeegee Ultra Hygienic (700mm)**  
Single Blade  
700mm  
H174



Food Safety Documentation Available:  
[www.hillbrush.com](http://www.hillbrush.com). Using Keyword: PLSB70



**Squeegee Double Blade (400mm)**  
Cassette Type  
400mm  
H175



Food Safety Documentation Available:  
[www.hillbrush.com](http://www.hillbrush.com). Using Keyword: SQCAS4



**Squeegee Double Blade (600mm)**  
Cassette Type  
600mm  
H176



Food Safety Documentation Available:  
[www.hillbrush.com](http://www.hillbrush.com). Using Keyword: SQCAS6



**Squeegee Ultra Hygienic (600mm)**  
Revolving Neck  
Single Blade  
600mm  
H178



Food Safety Documentation Available:  
[www.hillbrush.com](http://www.hillbrush.com). Using Keyword: SWPLSB60



**Squeegee Cassette Type Refill**  
400mm  
H190



Food Safety Documentation Available:  
[www.hillbrush.com](http://www.hillbrush.com). Using Keyword: CAS4



**Squeegee Cassette Type Refill**  
600mm  
H191



Food Safety Documentation Available:  
[www.hillbrush.com](http://www.hillbrush.com). Using Keyword: CAS6





### Condensation Squeegee

420mm  
H180



Food Safety Documentation Available  
From New Zealand Brush Co Using  
Ref #28420



### Bottle for Condensation Squeegee

White  
1.0L  
H250

\*Works with handles #7 and #8 only

+5

Food Safety Documentation Available  
From New Zealand Brush Co using  
Ref #0427

7.

### Handle Telescopic Waterfed

\*Requires Adapter H211  
1360mm  
H212



Food Safety Documentation Available:  
[www.hillbrush.com](http://www.hillbrush.com) Using keyword: ALH19

9.

### Handle Telescopic Waterfed

2 Stage  
1750-3000mm  
H207



Food Safety Documentation Available  
From New Zealand Brush Co Using  
Ref #29826



### Plastic Waterflow Adapter Connector

\* Requires Handle H212  
127mm  
H211



Food Safety Documentation Available  
From New Zealand Brush Co using  
Keyword: WH/CON

10.

### Handle Telescopic Waterfed

3 Stage  
1600-5300mm  
H209



Food Safety Documentation Available  
From New Zealand Brush Co using  
Ref #29775-N

7.



9.



10.





1.

### Handle Standard

Plastic  
173mm  
H205



Food Safety Documentation Available:  
[www.hillbrush.com](http://www.hillbrush.com). Using Keyword: B1785



2.

### Handle Standard

Aluminum  
340mm  
H204



Food Safety Documentation Available:  
[www.hillbrush.com](http://www.hillbrush.com). Using Keyword: ALH30



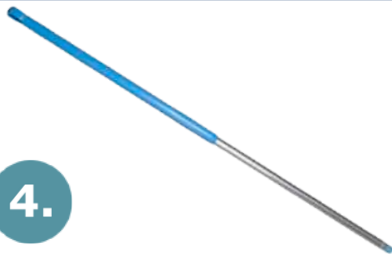
3.

### Handle Standard

Aluminum  
700mm  
H206



Food Safety Documentation Available:  
[www.hillbrush.com](http://www.hillbrush.com). Using Keyword: ALH15



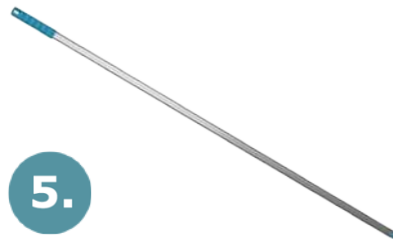
4.

### Handle Ergonomic

Aluminium  
1350mm  
H201



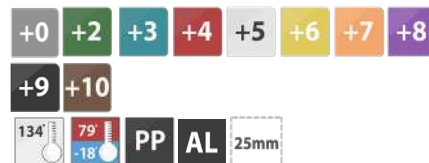
Food Safety Documentation Available:  
[www.hillbrush.com](http://www.hillbrush.com). Using Keyword: ALH27



5.

### Handle Standard

Aluminum  
1360mm  
H203



Food Safety Documentation Available:  
[www.hillbrush.com](http://www.hillbrush.com). Using Keyword: ALH7



6.

### Handle Ergonomic One Piece

Reinforced Polypropylene  
Ultra Hygienic 1400mm  
H200



Food Safety Documentation Available:  
[www.hillbrush.com](http://www.hillbrush.com). Using Keyword: PLH3



7.

### Handle Ergonomic

Aluminium  
1550mm  
H202



Food Safety Documentation Available:  
[www.hillbrush.com](http://www.hillbrush.com). Using Keyword: ALH8



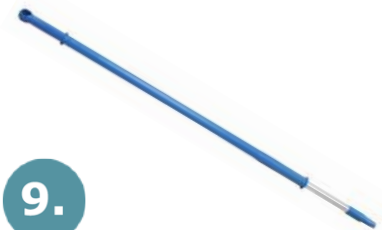
8.

### Handle Telescopic Waterfed

2 Stage  
1750-3000mm  
H207



Food Safety Documentation Available  
From New Zealand Brush Co Using  
Ref #29826



9.

### Handle Telescopic Non-Waterfed

2 Stage  
1750-3000mm  
H208



Food Safety Documentation Available  
From New Zealand Brush Co Using  
Ref #29856



**Plastic Angle Adapter Connector**

Black  
140mm  
H210

+9

Food Safety Documentation Available:  
[www.hillbrush.com](http://www.hillbrush.com). Using Keyword: AH/CON

10.

**Handle Telescopic Waterfed**

3 Stage  
1600-5300mm  
H209

+0

134 79 -18 PP AL

Food Safety Documentation Available  
From New Zealand Brush Co using  
Ref #29775-N





**Shovel Ergonomic Large Blade D Grip**  
330 x 390mm  
Overall Length: 1320mm  
H302

+2 +3 +4 +5 +6

134° 79° -18° PP

Food Safety Documentation Available:  
[www.hillbrush.com](http://www.hillbrush.com). Using Keyword: PSHOPL



**Shovel Large Blade D Grip**  
320 x 310mm  
Overall Length: 1170mm  
H300

+2 +3 +4 +5 +6 +7 +9

134° 79° -18° PP

Food Safety Documentation Available:  
[www.hillbrush.com](http://www.hillbrush.com). Using Keyword: PSH6



**Shovel Small Blade T Grip**  
260 x 320mm  
Overall Length: 1150mm  
H301

+2 +3 +4 +5 +6 +7 +9

134° 79° -18° PP

Food Safety Documentation Available:  
[www.hillbrush.com](http://www.hillbrush.com). Using Keyword: PSH2



**Shovel Ergonomic Large Blade D Grip**  
270 x 350mm  
Overall Length: 1320mm  
H303

+0 +10

134° 79° -18° PP

Food Safety Documentation Available:  
[www.hillbrush.com](http://www.hillbrush.com). Using Keyword: PSHOPS



**Bucket Ultra Hygienic**  
12 Litre  
H305

+0 +2 +3 +4 +5 +6 +7 +9

+9 +10

134° 79° -18° PP 12L

Food Safety Documentation Available:  
[www.hillbrush.com](http://www.hillbrush.com). Using Keyword: MBK15



**Bucket Lid Ultra Hygienic**  
12 Litre  
H306

+2 +3 +4 +5 +6 +7 +8 +9

134° 79° -18° PP

Food Safety Documentation Available:  
[www.hillbrush.com](http://www.hillbrush.com). Using Keyword: MBK15/LID



**Bucket Round**  
20L  
3900

+2 +3 +4 +5 +6 +7 +8 +9

PP

Food Safety Documentation  
Available Upon Request



**Bucket Lid**  
For 20L Bucket  
3910

+2 +3 +4 +5 +6 +9

PP

Food Safety Documentation  
Available Upon Request





### Crate 'Stack & Nest'

32L  
645mm x 413mm x 200mm  
L750



PP

Food Safety Documentation:  
Available Upon Request



### Crate 'Stack & Nest'

52L  
645mm x 413mm x 276mm  
L751



PP

Food Safety Documentation:  
Available Upon Request



### Paddle Without Holes

One Piece 160 x 260mm  
Overall Length: 1200mm  
H340

+5



Food Safety Documentation Available:  
[www.hillbrush.com](http://www.hillbrush.com). Using Keyword: PADL10



### Paddle With Holes

One Piece 160 x 260mm  
Overall Length: 1200mm  
H341

+5



Food Safety Documentation Available:  
[www.hillbrush.com](http://www.hillbrush.com). Using Keyword: PADL11



### Rake Head

205mm Wide  
Fits Any Hillbrush Handle  
L791

+5

PP

Food Safety Documentation Available  
From New Zealand Brush Co Using Ref #56915



### Lobby Pan & Brush Set

H330



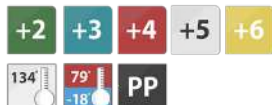
Food Safety Documentation Available:  
[www.hillbrush.com](http://www.hillbrush.com). Using Keyword: DP7SET





### Hand Scoop Seamless

500g  
105mm Wide  
H310



Food Safety Documentation Available:  
[www.hillbrush.com](http://www.hillbrush.com). Using Keyword: SCOOP2



### Hand Scoop Seamless

750g  
125mm Wide  
H311



Food Safety Documentation Available:  
[www.hillbrush.com](http://www.hillbrush.com). Using Keyword: SCOOP3



### Hand Scoop Seamless

1000g  
160mm Wide  
H312



Food Safety Documentation Available:  
[www.hillbrush.com](http://www.hillbrush.com). Using Keyword: SCOOP4



### Hand Scoop

Feed Type 1.6kg  
L747



### Measuring Jug

500ml  
L755



### Measuring Jug

1L  
L756



### Measuring Jug

2L  
L757

+5



### Measuring Jug

3L  
L758



### Measuring Jug

5L  
L759







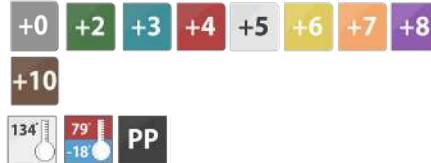
**Scraper Hand**  
76mm Wide  
H316



Food Safety Documentation Available:  
[www.hillbrush.com](http://www.hillbrush.com). Using Keyword: PSC1



**Scraper Hand**  
110mm Wide  
H317



Food Safety Documentation Available:  
[www.hillbrush.com](http://www.hillbrush.com). Using Keyword: PSC2



**Scraper Hand Heat Resistant**  
For Hot Surfaces Up To 240°C  
110mm Wide  
H318



Food Safety Documentation Available:  
[www.hillbrush.com](http://www.hillbrush.com). Using Keyword: PSC5



**Scraper Stainless Steel**  
38mm  
H321



Food Safety Documentation Available:  
[www.hillbrush.com](http://www.hillbrush.com). Using Keyword: MSC3/38



**Scraper Stainless Steel**  
75mm  
H322



Food Safety Documentation Available:  
[www.hillbrush.com](http://www.hillbrush.com). Using Keyword: MSC3



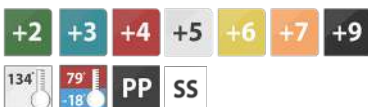
**Scraper Flexible**  
Plastic  
200mm  
H315



Food Safety Documentation Available:  
[www.hillbrush.com](http://www.hillbrush.com). Using Keyword: FLPSC3



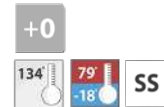
**Floor Scraper Stainless Steel Blade**  
200mm Wide (Fitted With Handle)  
1300mm Aluminium Handle  
H319



Food Safety Documentation Available:  
[www.hillbrush.com](http://www.hillbrush.com). Using Keyword: MSC1



**Floor Scraper Stainless Steel Replacement Blade**  
200mm  
H320



Food Safety Documentation Available:  
[www.hillbrush.com](http://www.hillbrush.com). Using Keyword: MBLD1



**Paddle Scraper Blade**  
White  
112 x 235mm  
H342



Food Safety Documentation Available  
From New Zealand Brush Co Using  
Ref #28291-1

# Shadow Boards

A shadow board is a bespoke organisation tool that enables companies and businesses to segregate the workplace cleaning equipment, to monitor the quality and whereabouts of each product, and more importantly in food service/processing situations, to avoid any cross contamination. Each board has a selection of product 'shadows' (single colour product image representations) printed onto it, with hooks or holders to secure the product in place (available separately). Each board can have a variety of products on, and is colour coded to help with segregation and monitoring

## KEY FEATURES

- Compact, hygienic design
- Easy to clean
- Available in 10mm "multiboard" PVC, 4mm ACM (aluminium composite) or full Anti-Microbial PVC (indented upon request from England)
- Wall mounted and portable formats available
- Single and double sided options available
- Customisable with your own logo and message.

**Option to add your company logo**

**Fully customizable options available**



## WHAT ARE THE KEY BENEFITS?

- Hillbrush shadow boards provide excellent workplace standardisation.
- Equipment life is maximised through the reduction of replacement costs by ensuring that the correct equipment is always available and in good condition.
- Improves colour coded segregation, allergen and equipment control within the site.
- Shadow boards are fully bespoke so can comply with any corporate branding for your company.
- Colour coded shadow boards are essential for good house keeping and reinforce the colour coding policy on site.
- The use of shadow boards raises employee accountability and cleaning standards whilst providing an integral part of continuous improvement.
- The shadow boards can be custom made to your needs and include your company logo and message. Simply send us an enquiry by contacting New Zealand Brush.

## WHAT MATERIALS ARE THEY AVAILABLE IN?

### PVC MULTIBOARD

- 10mm wall mounted boards
- Portable versions not available for PVC multiboards.

### ACM (Aluminium Composite)

- A standard wall mounted ACM (aluminium composite) board is 4mm.
- These boards are compact, hygienic, easy to clean, totally bespoke and are available as portable boards, if required.
- The wipe clean surface provides great protection from bacteria once cleaned, therefore minimising the risk of cross contamination.

### ANTI-MICROBIAL PVC (Indented Upon Request From The UK)

For the ultimate protection against contamination and the most efficient way of keeping your workplace clean and tidy, Hillbrush offers a fully anti-microbial shadow board in 3mm and 6mm PVC (polyvinyl chloride). These boards are manufactured from co-extruded PVC that has been infused with Biomaster Anti-Bacterial, Silver-Ion Technology. These boards offer a multitude of features including water and chemical resistance, fire proof and anti-static properties and are even recyclable at the end of their life.



# Shadow Boards in Five Steps

**A simple process to create a safer, cleaner and well-organised workplace through order and standardisation.**

## 1. Sort ✓

The first step, Sort, involves going through all the tools, furniture, materials, equipment, etc. in a work area to determine what needs to be present and what can be removed.

## 2. Set In Order ✓

Organize into designated colour coded zones. Once the extra clutter is gone, it's easier to see what's what. Now work groups can come up with their own strategies for sorting through the remaining items.

## 3. Shine ✓

Carry out regular cleaning and maintenance. The Shine stage focuses on cleaning up the work area, which means sweeping, mopping, dusting, wiping down surfaces, putting tools and materials away, etc.

## 4. Standardise ✓

Set out cleaning and maintenance procedures. Once the first three steps of SS are completed, things should look pretty good. All the extra stuff is gone, everything is organized, spaces are cleaned, and equipment is in good working order.

## 5. Sustain ✓

Ensure standards are followed. Sustain refers to the process of keeping these five steps running smoothly, but also of keeping everyone in the organization involved.



### DON'T WANT TO DRILL INTO YOUR WALL TO MOUNT THE SHADOW BOARD?

This strong magnetic mount attaches to the board and then magnetically attaches to your metal lined wall, allows for easy cleaning behind the board when required.  
**Code: L7940**





### Wall Rail

Aluminium  
515mm  
H223



Food Safety Documentation Available:  
[www.hillbrush.com](http://www.hillbrush.com). Using Keyword: RAIL500



### Wall Rail Hook

Plastic  
H220



Food Safety Documentation Available:  
[www.hillbrush.com](http://www.hillbrush.com). Using Keyword: HDHOOK1



### Wall Rail Clip

20-25mm  
H221



Food Safety Documentation Available:  
[www.hillbrush.com](http://www.hillbrush.com). Using Keyword: HOLD1



### Wall Rail Clip

25-35mm  
H222



Food Safety Documentation Available:  
[www.hillbrush.com](http://www.hillbrush.com). Using Keyword: HOLD2



### Wall Rail Single Hook Stainless Steel

304 Stainless Steel  
Fits into wall rail  
L792



### Wall Rail Double Hook Stainless Steel

304 Stainless Steel  
Fits into wall rail  
L793



### Wall Rail (Single)

Only Wall Mountable  
Stainless Steel  
50mm  
H226



Food Safety Documentation Available:  
[www.hillbrush.com](http://www.hillbrush.com). Using Keyword: SSHOOK1



### Wall Rail (Triple)

Stainless Steel  
310mm  
H227



Food Safety Documentation Available:  
[www.hillbrush.com](http://www.hillbrush.com). Using Keyword: SSHANG1



### Wall Bracket (for Bucket)

120mm  
H229



Food Safety Documentation Available:  
[www.hillbrush.com](http://www.hillbrush.com). Using Keyword: HH2



### Chute Brush (75mm)

White Plastic Core  
H150



Food Safety Documentation Available:  
[www.hillbrush.com](http://www.hillbrush.com). Using Keyword: B1529/75



### Chute Brush (95mm)

White Plastic Core  
H151



Food Safety Documentation Available:  
[www.hillbrush.com](http://www.hillbrush.com). Using Keyword: B1529/95



### Chute Brush (115mm)

White Plastic Core  
H152



Food Safety Documentation Available:  
[www.hillbrush.com](http://www.hillbrush.com). Using Keyword: B1529/115



### External Pipe Cleaning Brush

Blue PBT Bristles With SS Twisting Wire  
Fits Any Hillbrush Handle  
520 x 120mm  
H140



Food Safety Documentation Available:  
[www.hillbrush.com](http://www.hillbrush.com). Using Keyword: T1072



### Tube Brush With Long Resin Set Grip

13mm Diameter  
375mm  
H142



Food Safety Documentation Available:  
[www.hillbrush.com](http://www.hillbrush.com). Using Keyword: T831



### Tube Brush With Long Resin Set Grip

25mm Diameter  
375mm  
H143



Food Safety Documentation Available:  
[www.hillbrush.com](http://www.hillbrush.com). Using Keyword: T832



### Tube Brush With Long Resin Set Grip

38mm Diameter  
375mm  
H144



Food Safety Documentation Available:  
[www.hillbrush.com](http://www.hillbrush.com). Using Keyword: T833



### Tube Brush With Long Resin Set Grip

50mm Diameter  
400mm  
H145



Food Safety Documentation Available:  
[www.hillbrush.com](http://www.hillbrush.com). Using Keyword: T834



### Tube Brush With Long Resin Set Grip

63mm Diameter  
435mm  
H146

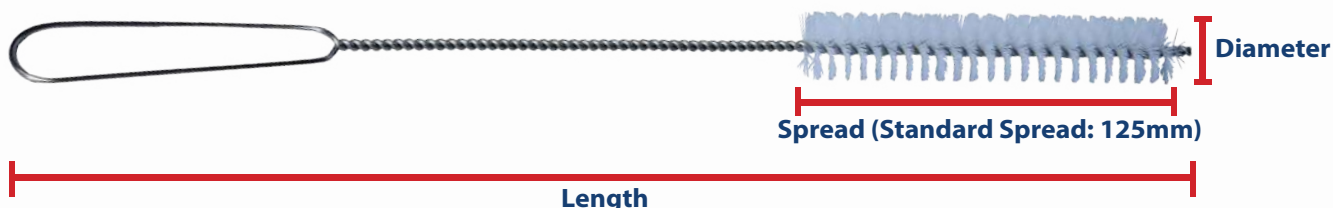


Food Safety Documentation Available:  
[www.hillbrush.com](http://www.hillbrush.com). Using Keyword: T835

# Custom Made Tube Brushes



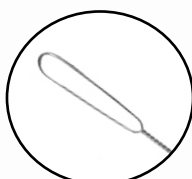
## Dimensions (Length x Spread x Diameter)



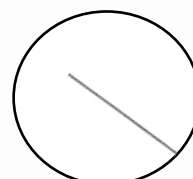
## Handle



Circle / Loop



Open



Straight

## Tip

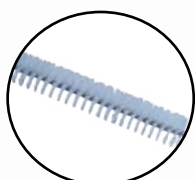


Straight



Fan Tip

## Fibre



White Nylon



Blue Nylon



Brasswire



Natural Hair

## Design your brush

Length			
Spread			
Diameter			
Handle			
Tip			
Fibre			



# RESIN-SET DRS® BRUSHWARE

The world's most effective and reliable method of filament retention, first developed in 1986. Resin-Set DRS® contributes to a longer product life and minimises the risk of filament loss, which can have severe consequences in the food manufacturing industry. Food-grade stainless steel staples secure the filaments into a recessed brush back, which is then flooded with an Anti-Microbial epoxy resin to complete the Dual Retention System (DRS). The product undergoes an extensive process to dissipate the resin into every crevice, eliminating areas for dirt and moisture to accumulate. All components are FDA/EU approved.



## The #1 Choice for the Food Manufacturing Industry

- ✓ Retention system twice as strong as fusing
- ✓ Excellent and reliable cleaning performance
- ✓ Most comprehensive range of its kind
- ✓ Proven track record over a 30+ year history
- ✓ Recommended by industry professionals
- ✓ 7 colours to support HACCP and 5S protocols
- ✓ Food contact approved by FDA and EU bodies
- ✓ Constructed from robust virgin materials
- ✓ Moulded and assembled by our expert team
- ✓ Autoclavable up to 134° Celsius



RESIN-SET DRS® BRUSHWARE



[www.nzbrush.co.nz](http://www.nzbrush.co.nz)

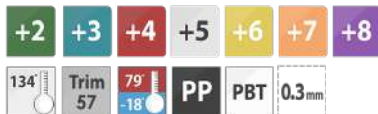
TALK TO US 0800 692 787

[www.nzbrush.co.nz](http://www.nzbrush.co.nz)



### Resin-Set Banister Brush

Soft Fill  
317mm  
H452



Food Safety Documentation Available:  
[www.hillbrush.com](http://www.hillbrush.com). Using Keyword: B866RES



### Resin-Set Banister Brush

Stiff Fill  
317mm  
H453



Food Safety Documentation Available:  
[www.hillbrush.com](http://www.hillbrush.com). Using Keyword: B867RES



### Resin-Set Stainless Steel Wire Scratch

279mm  
H459



Food Safety Documentation Available:  
[www.hillbrush.com](http://www.hillbrush.com). Using Keyword: WS6SRES



### Resin-Set Hand Brush Short Handle

Stiff Fill  
254mm  
H454



Food Safety Documentation Available:  
[www.hillbrush.com](http://www.hillbrush.com). Using Keyword: D4RES



### Resin-Set Hand Brush

Stiff Fill  
406mm  
H455



Food Safety Documentation Available:  
[www.hillbrush.com](http://www.hillbrush.com). Using Keyword: D9RES



### Resin-Set Hand Scrub Double Wing Dual

Stiff Fill  
210mm  
H460

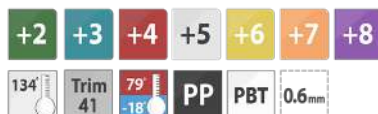


Food Safety Documentation Available:  
[www.hillbrush.com](http://www.hillbrush.com). Using Keyword: ST5RES



### Resin-Set Deck Scrub

Stiff Fill  
305mm  
H458



Food Safety Documentation Available:  
[www.hillbrush.com](http://www.hillbrush.com). Using Keyword: B770RES



### Resin-Set Floor Broom

Medium Fill  
457mm  
H456



Food Safety Documentation Available:  
[www.hillbrush.com](http://www.hillbrush.com). Using Keyword: B809RES



### Resin-Set Tank Brush

Stiff Fill  
216mm  
H457



Food Safety Documentation Available:  
[www.hillbrush.com](http://www.hillbrush.com). Using Keyword: D79RES





**Pastry Brush (50mm)**

Resin Set  
H450



Food Safety Documentation Available:  
[www.hillbrush.com](http://www.hillbrush.com). Using Keyword: GL11



**Pastry Brush (75mm)**

Resin Set  
H451



Food Safety Documentation Available:  
[www.hillbrush.com](http://www.hillbrush.com). Using Keyword: GL31



Retention system twice as strong as fusing



Excellent and reliable cleaning performance



Most comprehensive range of its kind



Proven track record over a 30 year history



Recommended by industry professionals



7 colours to support HACCP and 5S protocols



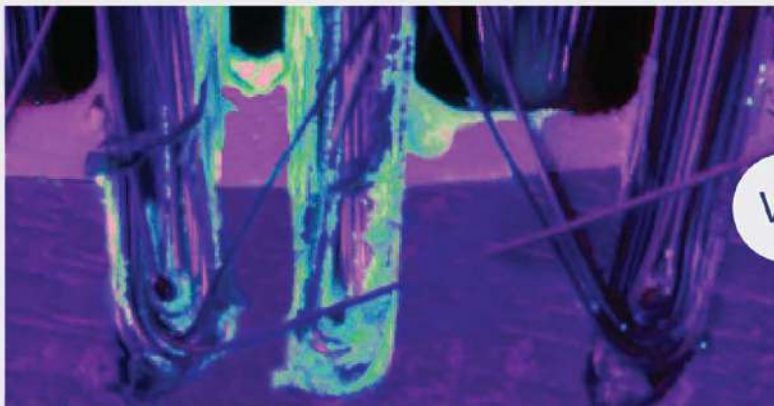
Food contact approved by FDA and EU bodies



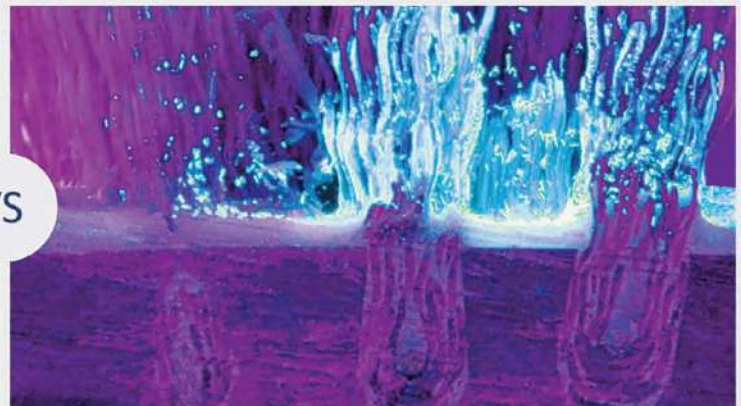
Constructed from robust virgin materials

## THE #1 CHOICE FOR THE FOOD MANUFACTURING INDUSTRY

Hillbrush Resin-Set DRS® brushes use stainless steel staples to secure the tufts into a recessed brush back, which is then flooded with a food-contact approved epoxy resin. The resin is expertly dissipated between filaments to eliminate bacterial hotspots and is supported by Biomaster's renowned Antibacterial Technology additive.



VS



### IMITATION RESIN-SET

Resin floated on the surface with cavity unpenetrated and vulnerable to bacteria.

### HILLBRUSH RESIN-SET DRS®

Anti-microbial resin fully penetrates the cavity and inhibits bacterial growth.



## ANTI-MICROBIAL HYGIENIC TOOLS

Designed for areas that require exceptionally high standards of cleanliness and due diligence in controlling bacterial contamination. Each component contains Biomaster Antibacterial Technology, which uses a silver-ion base to inhibit bacteria including MRSA, E. coli, Listeria spp and Campylobacter. All components are FDA/EU approved.



Biomaster Antibacterial Technology present in every component

Biomaster protected surface

Bacteria can't survive on the product surface

Anti-Microbial epoxy resin completes the DRS process

Food grade stainless steel staples secure the filaments



### Anti-Microbial Banister Brush Soft

317mm  
H400

+3 +4 +6 +8

134° Trim 57 79° -18° PP PBT 0.3mm

Food Safety Documentation Available:  
www.hillbrush.com. Using Keyword: AMB866



### Anti-Microbial Banister Brush Stiff

317mm  
H401

+2 +3 +4 +6 +8

134° Trim 57 79° -18° PP PBT 0.6mm

Food Safety Documentation Available:  
www.hillbrush.com. Using Keyword: AMB867



### Anti-Microbial Dustpan Open Plastic

325mm  
H407

+2 +3 +4 +6 +8

134° 79° -18° PP

Food Safety Documentation Available:  
www.hillbrush.com. Using Keyword: AMDP13



### Anti-Microbial Hand Brush Stiff Short Handle

254mm  
H402

+3 +4 +6 +8

134° Trim 45 79° -18° PP PBT 0.6mm

Food Safety Documentation Available:  
www.hillbrush.com. Using Keyword: AMD4



### Anti-Microbial Hand Scrub Double Wing Dual Stiff

210mm  
H404

+3 +4 +6 +8

134° Trim 35/27 79° -18° PP PBT 0.6mm

Food Safety Documentation Available:  
www.hillbrush.com. Using Keyword: AMST5



### Anti-Microbial Nail Brush Stiff

122mm  
H403

+8

134° Trim 17 79° -18° PP PBT 0.45mm

Food Safety Documentation Available:  
www.hillbrush.com. Using Keyword: AMNA4



### Anti-Microbial Scraper Hand 76mm Wide

H405

+3 +4 +6 +8

134° 79° -18° PP

Food Safety Documentation Available:  
www.hillbrush.com. Using Keyword: AMPSC1



### Anti-Microbial Scraper Hand 110mm Wide

H406

+3 +4 +6 +8

134° 79° -18° PP

Food Safety Documentation Available:  
www.hillbrush.com. Using Keyword: AMPSC2



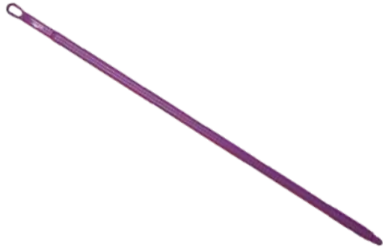
### Anti-Microbial Hand Scoop Seamless

500g H408  
1000g H409

+3 +4 +6 +8

134° 79° -18° PP

Food Safety Documentation Available:  
www.hillbrush.com. Using Keyword: AMSCOOP2  
AMSCOOP4



### Anti-Microbial Handle Ergonomic One Piece

1400mm Reinforced Polypropylene  
H415



Food Safety Documentation Available:  
[www.hillbrush.com](http://www.hillbrush.com). Using Keyword: AMPLH3



### Anti-Microbial Floor Broom Medium

305mm  
H411



Food Safety Documentation Available:  
[www.hillbrush.com](http://www.hillbrush.com). Using Keyword: AMB758



### Anti-Microbial Floor Broom Medium

457mm  
H412



Food Safety Documentation Available:  
[www.hillbrush.com](http://www.hillbrush.com). Using Keyword: AMB809



### Anti-Microbial Tank Brush Stiff

216mm  
H410



Food Safety Documentation Available:  
[www.hillbrush.com](http://www.hillbrush.com). Using Keyword: AMD79



### Anti-Microbial Deck Scrub Stiff

305mm  
H413



Food Safety Documentation Available:  
[www.hillbrush.com](http://www.hillbrush.com). Using Keyword: AMB770



### Anti-Microbial Squeegee Ultra Hygienic Single Blade

600mm  
H414



Food Safety Documentation Available:  
[www.hillbrush.com](http://www.hillbrush.com). Using Keyword: AMPLSB60



### Anti-Microbial Bucket Ultra Hygienic

12 Litre  
H416



Food Safety Documentation Available:  
[www.hillbrush.com](http://www.hillbrush.com). Using Keyword: AMMBK15



### Anti-Microbial Bucket Lid Ultra Hygienic

12 Litre  
H417



Food Safety Documentation Available:  
[www.hillbrush.com](http://www.hillbrush.com). Using Keyword: AMMBK15/LID



### Anti-Microbial Wall Bracket (for Bucket)

120mm  
H418



Food Safety Documentation Available:  
[www.hillbrush.com](http://www.hillbrush.com). Using Keyword: AMHH2



## Metal & X-ray Detectable Items



Metal & X-Ray Detectable items made by two of the United Kingdom's leading manufactures, Detectamet & Hillbrush. Detectamet products are made from a range of materials that offer the best capabilities for food, beverage and pharmaceutical production environments that cannot always use a metal alternative.

Detectamet products are made with a proportion of a metallic magnetic trace element which is present in most cases throughout the whole object, this is at a size and concentration that allows a homogeneous flow throughout, ensuring that all parts are potentially detectable by metal detection systems without changing the physical properties of the object. Detectamet Products are designed to be Food Safe – not just Detectable.

### Resin

After being secured into the brush back, the filaments are then flooded with an Anti-Microbial epoxy resin to complete the Dual Retention System (DRS®). The products undergo an extensive process to dissipate the resin into every crevice, eliminating areas for dirt and moisture to accumulate. Even the resin in our Total MDX tools is detectable and has been independently tested for quality assurance.

### Colours

Our Total MDX range comes in Dark Blue, however we do have an economical alternative available in 4 colours that still ensures high risk component traceability.

### Recessed Brush Back

Polypropylene is light and durable. It is also a very stiff material and has good impact resistance. The polypropylene is light and durable so if any chips do occur, it can be detected to avoid any excessive or unnecessary product wastage.



### Ink

We print the Salmon® logo alongside the name and code for each product without the worry of the ink getting into the food by using food-approved ink.

### Staples

We use food-grade stainless steel staples to secure the filaments into the brush back. The steel staples are metal & X-ray detectable. The detectability isn't affected by moisture and they won't corrode or rust in a moist environment.



**Pen MDX Retractable Elephant Style**

10 Pens  
Red Ink / Red Body



**+4**  
MDX

Food Safety Documentation Available  
From New Zealand Brush Co Using  
Ref #104-I03-C33-PA01



**Pen MDX Retractable Elephant Style**

10 Pens  
Green Ink / Green Body



**+2**  
MDX

Food Safety Documentation Available  
From New Zealand Brush Co Using  
Ref #104-I04-C44-PA01



**Pen MDX Retractable Elephant Style**

10 Pens  
Black Ink / Black Body



**+9**  
MDX

Food Safety Documentation Available  
From New Zealand Brush Co Using  
Ref #104-I02-C22-PA01



**Pen MDX Retractable Elephant Style**

10 Pens  
Blue Ink / Pink Body



**+1**  
MDX

Food Safety Documentation Available  
From New Zealand Brush Co Using  
Ref #104-I01-C99-PA01



**Pen MDX Retractable Elephant Style**

10 Pens  
Blue Ink / Green Body



**+2**  
MDX

Food Safety Documentation Available  
From New Zealand Brush Co Using  
Ref #104-I01-C44-PA01



**Pen MDX Retractable Elephant Style**

10 Pens  
Blue Ink / Blue Body



**+3**  
MDX

Food Safety Documentation Available  
From New Zealand Brush Co Using  
Ref #104-I01-C11-PA01



**Pen MDX Retractable Elephant Style**

10 Pens  
Blue Ink / Red Body



**+4**  
MDX

Food Safety Documentation Available  
From New Zealand Brush Co Using  
Ref #104-I01-C33-PA01



**Pen MDX Retractable Elephant Style**

10 Pens  
Blue Ink / White Body



**+5**  
MDX

Food Safety Documentation Available  
From New Zealand Brush Co Using  
Ref #104-I01-C66-PA01



**Pen MDX Retractable Elephant Style**

10 Pens  
Blue Ink / Yellow Body



**+6**  
MDX

Food Safety Documentation Available  
From New Zealand Brush Co Using  
Ref #104-I01-C55-PA01



**Pen MDX Retractable Elephant Style**

10 Pens  
Blue Ink / Orange Body  
D845



+7

MDX

Food Safety Documentation Available  
From New Zealand Brush Co Using  
Ref #104-I01-C88-PA01



**Pen MDX Retractable Elephant Style**

10 Pens  
Blue Ink / Purple Body  
D845



+8

MDX

Food Safety Documentation Available  
From New Zealand Brush Co Using  
Ref #104-I01-C77-PA01



**Pen MDX Retractable Elephant Style**

50 Pens  
Blue Ink / Black Body  
D845



+9

MDX

Food Safety Documentation Available  
From New Zealand Brush Co Using  
Ref #104-I01-C22-PA01



**Pen Refill Type (Standard Ink)**

10 Refills  
Green Ink  
D846



+2

MD

Food Safety Documentation Available  
From New Zealand Brush Co Using  
Ref #100-I04



**Pen Refill Type (Standard Ink)**

10 Refills  
Red Ink  
D846



+4

MD

Food Safety Documentation Available  
From New Zealand Brush Co Using  
Ref #100-I03



**Pen Refill Type (Standard Ink)**

10 Refills  
Black Ink  
D846



+9

MD

Food Safety Documentation Available  
From New Zealand Brush Co Using  
Ref #100-I02



**Pen Refill Type  
(Standard / Pressurised Cryo Ink)**

10 Refills  
Blue Ink  
Standard Ink D846  
Pressurised Cryo Ink D847



+3

MD

Food Safety Documentation Available  
From New Zealand Brush Co Using  
Ref #100-I02 (Standard Ink)  
Ref #100-I11 (Cryo Ink)



**Pen MD One Piece Stick Style With Clip**

50 Pens  
Blue Ink / Blue Body  
D840



+3

MD

Food Safety Documentation Available  
From New Zealand Brush Co Using  
Ref #105-C101-I01-PA01



**Pen MD One Piece Stick Style With Clip**

50 Pens  
Black Ink / Blue Body  
D841



+3

MD

Food Safety Documentation Available  
From New Zealand Brush Co Using  
Ref #105-C101-I02-PA01





**Pen MD One Piece Stick Style Without Clip**  
50 Pens  
Blue Ink/ Blue Body  
D842

+3

MD

Food Safety Documentation Available  
From New Zealand Brush Co Using  
Ref #105-C101-I01-PA02



**Pen MD One Piece Stick Style Without Clip**  
50 Pens  
Black Ink / Blue Body  
D843

+3

MD

Food Safety Documentation Available  
From New Zealand Brush Co Using  
Ref #105-C101-I02-PA02



**Pen MD Permanent Marker Pens**  
10 Pens  
Bullet Tip - Blue Ink  
D848

+3

MD

Food Safety Documentation Available  
From New Zealand Brush Co Using  
Ref #146-A06-P01-A07



**Pen MD Permanent Marker Pens**  
10 Pens  
Bullet Tip - Black Ink  
D849

+3

MD

Food Safety Documentation Available  
From New Zealand Brush Co Using  
Ref #146-A06-P02-A07



**Pen MD Permanent Marker Pens**  
10 Pens  
Bullet Tip - Red Ink  
D850

+3

MD

Food Safety Documentation Available  
From New Zealand Brush Co Using  
Ref #146-A06-P03-A07



**Pen MD Permanent Marker Pens**  
10 Pens  
Bullet Tip - Green Ink  
D851

+3

MD

Food Safety Documentation Available  
From New Zealand Brush Co Using  
Ref #146-A06-P04-A07



**Pen MD Whiteboard Marker Pens**  
10 Pens  
Bullet Tip - Blue Ink  
D852

+3

MD

Food Safety Documentation Available  
From New Zealand Brush Co Using  
Ref #145-A06-P01-A07



**Pen MD Whiteboard Marker Pens**  
10 Pens  
Bullet Tip - Black Ink  
D853

+3

MD

Food Safety Documentation Available  
From New Zealand Brush Co Using  
Ref #145-A06-P02-A07



**Pen MD Whiteboard Marker Pens**  
10 Pens  
Bullet Tip - Red Ink  
D854

+3

MD

Food Safety Documentation Available  
From New Zealand Brush Co Using  
Ref #145-A06-P03-A07



#### Pen MD Whiteboard Marker Pen

10 Pens  
Green Ink  
D855

+3

MD

Food Safety Documentation Available  
From New Zealand Brush Co Using  
Ref #145-A06-P04-A07



#### Pen MD Highlighters

5 Pens  
Non Retractable Chisel Tip - Pink Ink  
D856

+3

MD

Food Safety Documentation Available  
From New Zealand Brush Co Using  
Ref #150-A06-P09-A08



#### Pen MD Highlighters

5 Pens  
Non Retractable Chisel Tip - Orange Ink  
D857

+3

MD

Food Safety Documentation Available  
From New Zealand Brush Co Using  
Ref #150-A06-P08-A08



#### Pen MD Highlighters

5 Pens  
Non Retractable Chisel Tip - Yellow Ink  
D858

+3

MD

Food Safety Documentation Available  
From New Zealand Brush Co Using  
Ref #150-A06-P05-A08



#### Reel S/S Retractable Badge type D870

+0

MD

Food Safety Documentation Available  
From New Zealand Brush Co Using  
Ref #217-A65



#### Stapler MD Staple Free Stapler Blue D872

+3

MD

Food Safety Documentation Available  
From New Zealand Brush Co Using  
Ref #207-A65-T184-P01



#### Scissors S/S with Blue MD handle D871

+3

MD

Food Safety Documentation Available  
From New Zealand Brush Co Using  
Ref #206-S237-P01-Q01



#### Knife MD Plastic Sheet Cutter Blue D873

+3

MD

Food Safety Documentation Available  
From New Zealand Brush Co Using  
Ref #615-K101-T184-P01

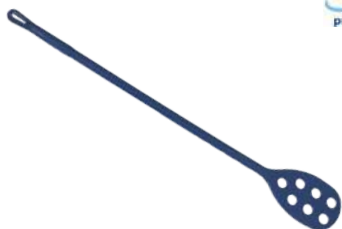


#### Knife MD Safety With Retractable Blade Blue D874

+3

MD

Food Safety Documentation Available  
From New Zealand Brush Co Using  
Ref #615R-K119-T037-A117



**Paddle MD with Holes**

160x250mm  
Overall Length: 1200mm  
D891

+3

MD

Food Safety Documentation Available  
From New Zealand Brush Co Using  
Ref #531-S249-A50



**Paddle MD without holes**

150mm wide  
Overall Length: 1320mm  
D892

+3

MD

Food Safety Documentation Available  
From New Zealand Brush Co Using  
Ref #531-S851-A51



**Paddle Stainless Steel**

120x248mm  
Overall Length: 915mm  
D893

+0

MD

Food Safety Documentation Available  
From New Zealand Brush Co Using  
Ref #671-S063



**MDX Shovel Small Blade D Grip**

Detectable Blade Only  
260 x 320mm  
Overall Length: 1150mm  
D810

+3



Food Safety Documentation Available:  
[www.hillbrush.com](http://www.hillbrush.com). Using Keyword: PSH13MDX



**Shovel Stainless Steel 304**

304 Grade  
267x356mm  
Overall Length: 991mm  
D880

+0

MD

Food Safety Documentation Available  
From New Zealand Brush Co Using  
Ref #670R-T330



**Scoop Stainless Steel**

907g  
100mm Handle  
D886

+0

MD

Food Safety Documentation Available  
From New Zealand Brush Co Using  
Ref #673-S562-A112



**Scoop Stainless Steel**

1814g  
100mm Handle  
D887

+0

MD

Food Safety Documentation Available  
From New Zealand Brush Co Using  
Ref #673-S563-A114



**Scoop Stainless Steel**

2720g  
115mm Handle  
D888

+0

MD

Food Safety Documentation Available  
From New Zealand Brush Co Using  
Ref #673-S564-A116



**Scoop Stainless Steel**

3628g  
115mm Handle  
D889

+0

MD

Food Safety Documentation Available  
From New Zealand Brush Co Using  
Ref #673-S565-A129





**MDX Hand Scoop Seamless (Blue)**

500g  
105mm Wide  
D804



Food Safety Documentation Available:  
[www.hillbrush.com](http://www.hillbrush.com). Using Keyword: SCOOP2MDX



**Scoop MD Square**

500g  
110mm Wide  
D883

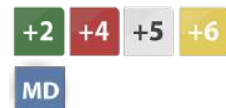


Food Safety Documentation Available  
From New Zealand Brush Co Using  
Ref #514-S086-P04-Z03



**Scoop MD Square**

750g  
135mm Wide  
D884



Food Safety Documentation Available  
From New Zealand Brush Co Using  
Ref #514-S087-P04-Z03



**MDX Hand Scoop Seamless (Blue)**

1000g  
160mm Wide  
D805



Food Safety Documentation Available: [www.hillbrush.com](http://www.hillbrush.com). Using Keyword: SCOOP4MDX



**Scoop MD Square**

1000g  
150mm Wide  
D885



Food Safety Documentation Available  
From New Zealand Brush Co Using  
Ref #514-S088-P04-Z03



**Scraper MD Flexible (Small)**

160mm x 103mm  
D830



Food Safety Documentation Available  
From New Zealand Brush Co Using  
Ref #523-S089-T103-P01



**Scraper MD Flexible (Large)**

225mm x 120mm  
D831



Food Safety Documentation Available  
From New Zealand Brush Co Using  
Ref #523-S091-T103-P01



**Scraper MD Bench**

Blue  
210mm x 130mm  
D834



Food Safety Documentation Available  
From New Zealand Brush Co Using  
Ref #523-S240-T389-P01



**MDX Scraper Hand  
(Blue)**

76mm Wide  
D808

+3



Food Safety Documentation Available:  
[www.hillbrush.com](http://www.hillbrush.com). Using Keyword: PSC1MDX



**Scraper MD Hand**

76mm Wide  
D832

+2 +4 +5 +6

MD

Food Safety Documentation Available  
From New Zealand Brush Co Using  
Ref #523-S104-T205-P04



**MDX Scraper Hand  
(Blue)**

110mm Wide  
D809

+3



Food Safety Documentation Available:  
[www.hillbrush.com](http://www.hillbrush.com). Using Keyword: PSC2MDX



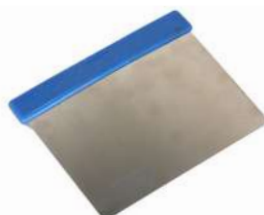
**Scraper MD Hand**

100mm Wide  
D833

+2 +4 +5 +6

MD

Food Safety Documentation Available  
From New Zealand Brush Co Using  
Ref #523-S105-T205-P04



**Scraper Flexi Blue Handle S/S Blade**

120mm x 100mm  
D894

+3

MD

Food Safety Documentation Available  
From New Zealand Brush Co Using  
Ref #522-T095-W11-Q03



**Scraper Rigid Blue Handle S/S Blade**

150mm x 125mm  
D895

+3

MD

Food Safety Documentation Available  
From New Zealand Brush Co Using  
Ref #522-T096-W11-Q03



**Cable Ties Nylon**

Pack 100  
380x4.7mm  
D876

+3

MD

Food Safety Documentation Available  
From New Zealand Brush Co Using  
Ref #800-CT03-S125-X39



**Cable Ties Nylon**

Pack 100  
200x4.6mm  
D877

+3

MD

Food Safety Documentation Available  
From New Zealand Brush Co Using  
Ref #800-CT03-S118-X39



**Cable Ties Nylon**

Pack 100  
145x3.4mm  
D878

+3

MD

Food Safety Documentation Available  
From New Zealand Brush Co Using  
Ref #800-CT03-S113-X39



**Plasters Strip MD (Blue)**

Pack 100  
75x25mm  
D879

+3

MD

Food Safety Documentation Available  
From New Zealand Brush Co Using  
Ref #400-T151-S136-X11



**Earplugs Metal Detectable Corded**

Box of 100 Pairs  
Class 5  
L799

+3

MD

**Clipboard Stainless Steel A4 Portrait**

285mm x 205mm  
D875

+3

MD

Food Safety Documentation Available  
From New Zealand Brush Co Using  
Ref #300-O06-P45-A11



**MDX Bucket Ultra Hygienic  
(Blue)**

12 Litre  
D811

+3



Food Safety Documentation Available:  
[www.hillbrush.com](http://www.hillbrush.com). Using Keyword: MBK15MDX



**MDX Bucket Lid Ultra Hygienic  
(Blue)**

12 Litre  
D812

+3



Food Safety Documentation Available:  
[www.hillbrush.com](http://www.hillbrush.com). Using Keyword: MBK15/LIDMDX



**MDX Wall Bracket (for Bucket)  
(Blue)**

120mm  
D813

+3



Food Safety Documentation Available:  
[www.hillbrush.com](http://www.hillbrush.com). Using Keyword: HH2MDX



**Bucket Stainless Steel**

12L  
L763

+0

SS







**MDX Banister Brush Medium  
RESIN SET**

317mm  
D802



Food Safety Documentation Available:  
[www.hillbrush.com](http://www.hillbrush.com). Using Keyword: B866BMDX



**MDX Dustpan Open  
Plastic (Blue)**

325mm  
D803



Food Safety Documentation Available:  
[www.hillbrush.com](http://www.hillbrush.com). Using Keyword: DP13MDX



**MDX Hand Brush Short Handle  
Stiff RESIN SET (Blue)**

254mm  
D806



Food Safety Documentation Available:  
[www.hillbrush.com](http://www.hillbrush.com). Using Keyword: D4BMDX



**MDX Medium Floor Broom  
RESIN SET (Blue)**

305mm  
D807



Food Safety Documentation Available:  
[www.hillbrush.com](http://www.hillbrush.com). Using Keyword: B758BMDX



**Wipes MD Alc Free In Small MD Tub  
Pack 200  
Blue  
D882**



Food Safety Documentation Available  
From New Zealand Brush Co Using  
Ref #432-T283-P01-X35



**MDX Squeegee Hand Ultra  
Hygienic Single Blade (Blue)**

300mm Wide  
D801



Food Safety Documentation Available:  
[www.hillbrush.com](http://www.hillbrush.com). Using Keyword: B1802MDX



**MDX Squeegee Ultra Hygienic  
Single Blade (Blue)**

600mm  
D800



Food Safety Documentation Available:  
[www.hillbrush.com](http://www.hillbrush.com). Using Keyword: PLSB60MDX



**MDX Handle Standard Stainless  
Steel (Blue)**

1350mm  
D814



Food Safety Documentation Available:  
[www.hillbrush.com](http://www.hillbrush.com). Using Keyword: SSH2MDX



**Stirrer MD Without Holes**

40mm wide  
Overall Length: 415mm  
D890



Food Safety Documentation Available  
From New Zealand Brush Co Using  
Ref #517-A51-P01



### Polyethylene Gloves

5000 pack  
240mm Cuff, 1.0g

Clear:	<b>S</b> H5001	<b>M</b> H5002	<b>L</b> H5003	<b>XL</b> H5004
Blue:	<b>S</b> H5005	<b>M</b> H5006	<b>L</b> H5007	<b>XL</b> H5008



### TPE Powder Free Gloves

2000 pack  
240mm Cuff, 2.0g

Clear:	<b>S</b> H5009	<b>M</b> H5010	<b>L</b> H5011	<b>XL</b> H5012
Blue:	<b>S</b> H5013	<b>M</b> H5014	<b>L</b> H5015	<b>XL</b> H5016



### Vinyl Gloves

1000 pack  
240mm Cuff, 5.0g  
Powder Free

Clear:	<div>S</div> <div>H5017</div>	<div>M</div> <div>H5018</div>	<div>L</div> <div>H5019</div>	<div>XL</div> <div>H5020</div>	<div>2XL</div> <div>H5021</div>
Blue:	<div>S</div> <div>H5022</div>	<div>M</div> <div>H5023</div>	<div>L</div> <div>H5024</div>	<div>XL</div> <div>H5025</div>	



### Latex Examination Gloves

1000 pack  
240mm Cuff, 6.0g  
Powder Free

White:	<b>XS</b> H5026	<b>S</b> H5027	<b>M</b> H5028	<b>L</b> H5029	<b>XL</b> H5030
--------	--------------------	-------------------	-------------------	-------------------	--------------------



### High Risk Latex Examination Gloves

500 pack  
300mm Cuff, 18.5g  
Powder Free

Cobalt Blue:	<b>S</b> H5031	<b>M</b> H5032	<b>L</b> H5033	<b>XL</b> H5034	<b>2XL</b> H5035
--------------	-------------------	-------------------	-------------------	--------------------	---------------------



### Nitrile Examination Gloves

1000 pack  
240mm Cuff, 5.0g  
Powder Free

White:	S H5036	M H5037	L H5038	XL H5039		
Blue:	S H5040	M H5041	L H5042	XL H5043	XL H5044	2XL H5045



### Nitrile Long Cuff Examination Gloves

1000 pack  
300mm Cuff, 6.0g  
Powder Free

Blue:	<b>S</b> H5046	<b>M</b> H5047	<b>L</b> H5048	<b>XL</b> H5049	<b>2XL</b> H5050
-------	-------------------	-------------------	-------------------	--------------------	---------------------



### Nitrile Examination Gloves

1000 pack (H5055: 900 pack)  
240mm Cuff, 7.0g  
Powder free

Black:	<b>S</b> H5051	<b>M</b> H5052	<b>L</b> H5053	<b>XL</b> H5054	<b>2XL</b> H5055
--------	-------------------	-------------------	-------------------	--------------------	---------------------



### Silverlined Latex Gloves

192 pack  
300mm Cuff, 70.0g

Blue:	<b>S</b> H5056	<b>M</b> H5057	<b>L</b> H5058	<b>XL</b> H5059	<b>2XL</b> H5060
Yellow:	<b>S</b> H5061	<b>M</b> H5062	<b>L</b> H5063	<b>XL</b> H5064	<b>2XL</b> H5065



### Cotton Gloves

240 pack  
250mm Cuff, 500g

White: Standard  
H5066



### Polypropylene Bouffant Hats

600 pack  
610mm Wide, 12gsm

Colour: Blue White  
H5067 H5068



### Polypropylene Crimp Hats

1000 pack  
530mm Wide, 12gsm

Colour: Blue Green Red White Yellow Black  
H5069 H5070 H5071 H5072 H5073 H5074



### Polypropylene Full Face Balaclavas

400 pack  
Elasticated, 25gsm

Colour: White Blue  
H5075 H5076



### Polycotton Full Face Balaclavas

200 pack  
390mm  
Reuseable/Washable

Colour: White  
H5077



### Anti Fog Face Shield

Pack 90  
Elasticated Head Loop

Colour: Clear  
H5078



### Polypropylene Beard Covers

1000 pack  
Single Loop  
230mm x 430mm, 12gsm

Colour: White Blue  
H5079 H5080



### Polypropylene Beard Covers

1000 pack  
Double Loop  
230mm x 430mm, 12gsm

Colour: White Blue  
H5081 H5082



### Polypropylene Medical Face Masks

50 pack  
Ear loop design, 3 ply  
Type IIR

Colour: Blue  
H5083





**FFP2 Protective Face Masks**  
240 pack  
250mm Cuff, 500g

Colour: White  
H5084



**Polyethylene Back Tie Apron**  
400 pack  
800mm x 1250mm x 40mu

Colour: White Blue  
H5085 H5086



**Polyethylene Sleeveless Aprons**  
250 pack  
800mm x 1400mm x 30mu

Colour: White Blue Green  
H5087 H5088 H5089



**Polyethylene Splash Jacket**  
200 pack  
800 x 1300mm x 30mu

Colour: White Blue Green  
H5090 H5091 H5092



**Polyethylene Hooded Ponchos**  
96 pack  
800mm x 1300mm x 30mu

Colour: White Blue Green  
H5093 H5094 H5095



**Polypropylene Domed Laboratory Coat**  
25 pack  
45gsm

White: S M L XL 2XL  
H5096 H5097 H5098 H5099 H5100



**Polypropylene Isolation Gown**  
30 pack  
1200mm x 1400mm, 40gsm

Colour: Blue Yellow  
H5101 H5102



**Polypropylene Coated Isolation Gown**  
40 pack  
1200mm x 1400mm, 40gsm  
Liquid Proof

Colour: Blue Yellow  
H5103 H5104



**Polypropylene Coverall Type 5/6**  
16 pack  
55gsm

White: S M L XL 2XL 3XL  
H5111 H5112 H5113 H5114 H5115 H5116



### SMS Coverall Type 5/6

12 pack  
50gsm

White: 

S	M	L	XL	2XL	3XL
H5117	H5118	H5119	H5120	H5121	H5122
4XL					
H5123					



### Polyethylene Sleeve Covers

1600 pack  
200mm x 400mm x 20mu

Colour: 

White
H5124



### Polyethylene Extra Long Sleeve Covers

1100 pack  
200mm x 600mm x 20mu

Colour: 

White
H5125



### Polyethylene Sleeve Covers

1600 pack  
200mm x 400mm x 20mu

Colour: 

Blue
H5126



### Polypropylene Sleeve Covers

Pack 400  
200mm x 400mm x 25gsm

Colour: 

White
H5127



### Microporous Sleeve Covers

300 pack  
200mm x 400mm x 55gsm

Colour: 

White
H5128



### Polyethylene Shoe Covers

1600 pack  
200mm x 400mm, 3.5g

Colour: 

White	Blue
H5129	H5130



### Polypropylene Shoe Covers

600 pack  
200mm x 400mm, 25gsm

Colour: 

White	Blue
H5131	H5132



### Polyethylene Boot Covers

250 pack  
510mm x 70mu

Colour: 

Clear	Blue
H5133	H5134



**Laminated CPE Shoe Covers**

160 pack  
200mm x 400mm

Colour: White  
H5135



**Laminated CPE Shoe Covers**

120 pack  
510mm  
Double Sole

Colour: White  
H5136



**Apron PVC**

900 x 1200mm  
One Size Fits All  
L798

+3 +5







### Mop Standard

200g  
H351



Food Safety Documentation Available:  
[www.hillbrush.com](http://www.hillbrush.com). Using Keyword: MOP2/200



### Mop

Bio 200g  
Split Band Looped  
H352



Food Safety Documentation Available:  
[www.hillbrush.com](http://www.hillbrush.com). Using Keyword: MOP9/200



### Mop Ringer

Rayon  
16oz  
3950



### Wet Floor Sign A-Frame Folding

300mm x 620mm  
L770



### Wet Floor Sign Pyramid

320mm x 1170mm  
L772



### Mop Wringer Bucket

16L  
3930



### Bag Hoop 355mm Black

H309



Food Safety Documentation Available:  
[www.hillbrush.com](http://www.hillbrush.com). Using Keyword: HH1



### Wheelie Bin

120L  
L760



### Wheelie Bin

240L  
L761





**Flat Mop Pad 'DampDry 31'**  
250mm  
Colour-Coded Tags  
L784



**Flat Mop Pad 'DampDry 31'**  
400mm  
Colour-Coded Tags  
L785



**Flat Mop Pad 'Damp 43'**  
250mm  
Colour-Coded Tags  
L786



**Flat Mop Pad 'Damp 43'**  
400mm  
Colour-Coded Tags  
L788



**Flat Mop Pad 'Damp 43'**  
900mm  
Colour-Coded Tags  
L789



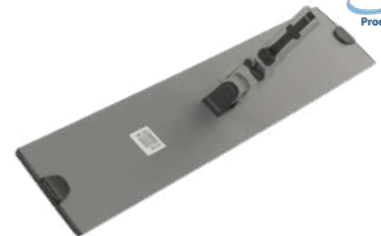
**Flat Mop Frame Adaptor**  
Allows Flat Mop Frame To Fit Any  
Hillbrush Handle.  
L790



**Flat Mop Frame**  
250mm  
Requires Adaptor L790+ To Fit Any  
Hillbrush Handle  
L780



**Flat Mop Frame**  
400mm  
Requires Adaptor L790+ To Fit Any  
Hillbrush Handle  
L781



**Flat Mop Frame**  
900mm  
Requires Adaptor L790+ To Fit Any  
Hillbrush Handle  
L783





**Washdown Heavy Duty Gun**  
Blue  
H240

+3

SS

Food Safety Documentation Available:  
[www.hillbrush.com](http://www.hillbrush.com). Using Keyword: WF01



**Washdown Hydrofoamer Gun**  
2.8 Litre  
H241

+5



Food Safety Documentation Available:  
[www.hillbrush.com](http://www.hillbrush.com). Using Keyword: HF2



**Washdown Stainless Steel 1/2\"/>**

+0

SS

Food Safety Documentation Available:  
[www.hillbrush.com](http://www.hillbrush.com). Using Keyword: WF09



**Washdown Stainless Steel 1/2\"/>**

+0

SS

Food Safety Documentation Available:  
[www.hillbrush.com](http://www.hillbrush.com). Using Keyword: WF08



**Washdown Stainless Steel Hydrofoamer Gun Connector**  
H244

+0

SS

Food Safety Documentation Available:  
[www.hillbrush.com](http://www.hillbrush.com). Using Keyword: WF14



**Washdown Stainless Steel Gun Connector**  
H245

+0

SS

Food Safety Documentation Available:  
[www.hillbrush.com](http://www.hillbrush.com). Using Keyword: WF02







**Knife - Narrow Curved Boning**

13cm Blade White Ribbed Handle  
L730

Different Style & Coloured Handles  
Available - Please Enquire

+5



**Knife - Curved Boning**

15cm Blade White Ribbed Handle  
L731

Different Style & Coloured Handles  
Available - Please Enquire

+5



**Knife - Straight Boning**

15cm Blade White Ribbed Handle  
L732

Different Style & Coloured Handles  
Available - Please Enquire

+5



**Knife - Wide Boning**

17cm Blade White Ribbed Handle  
L733

Different Style & Coloured Handles  
Available - Please Enquire

+5



**Knife - Serrated**

17cm Blade White Ribbed Handle  
L734

Different Style & Coloured Handles  
Available - Please Enquire

+5



**Knife - Mussel**

8cm Blade White Smooth Handle  
L735

Different Style & Coloured Handles  
Available - Please Enquire

+5



**Knife - Butchers**

22cm Blade White Smooth Handle  
L736

Different Style & Coloured Handles  
Available - Please Enquire

+5



**Knife - Butchers**

25cm Blade White Smooth Handle  
L737

Different Style & Coloured Handles  
Available - Please Enquire

+5



**Knife - Fish Filleting**

White Ribbed Handle  
L738

Different Style & Coloured Handles  
Available - Please Enquire

+5



**Cutting Board**

380 x 510 x 13mm  
L794

+2 +3 +4 +5 +6



**Cutting Board Rack**

6 Slot  
Chrome Plated Reinforced Base  
L796

+0



**Scour Pads**

140 x 150 x 10mm  
Pack of 10  
24025

+2



**Scour Pads**

200 x 150 x 10mm  
Pack of 10  
24020

+2



**Scour Pads**

200 x 150 x 10mm  
Pack of 10  
3085

+3 +4 +5 +6 +9



**Spray Bottle With Trigger**

750ml  
L748

+2 +3 +4 +5 +6 +9



**Spray Bottle With Trigger**

1L  
L749

+2 +3 +4 +5 +6 +9

## Custom-Made Products



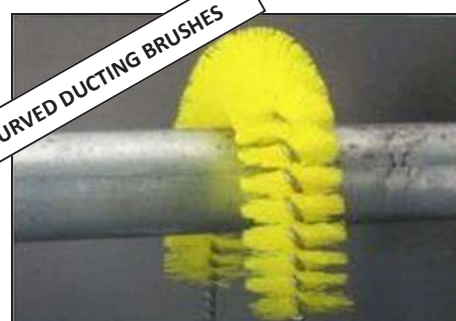
**Need something tailored to you specific to your needs?**

NZ Brush Co has a long tradition of making special brushes for special and unusual applications. Our service is unique, in that we can make a single special brush for you, or we can mass-produce a custom design.

Where necessary, we may produce a sample at a small charge or even at no cost to you, in order to ensure our finished product exactly matches your brush requirements.

We have the skills necessary to help you with your custom-made brush designs and to advise you on the best options available, often well below costly overseas products.

**For more information or for any enquires please phone: 0800 692 787 or email: [sales@nzbrush.co.nz](mailto:sales@nzbrush.co.nz)**





## Scrubber & Sweeper Brushes



**We manufacture and Refurbish brushes for all makes of scrubbers and sweepers.**

**Save money refurbishing brushes versus buying brand new OEM parts**





### Boot Cleaner

Galv Steel Frame With 3 Brushes  
8080

+2 +3 +4 +5 +6 +9



### Boot Cleaner Replacement Brushes

White Plastic Backing  
Coloured Bristles  
8013

+2 +3 +4 +5 +6 +9



### Gumboot

Steel Toe  
Bata Safemate  
L797

+5 +9

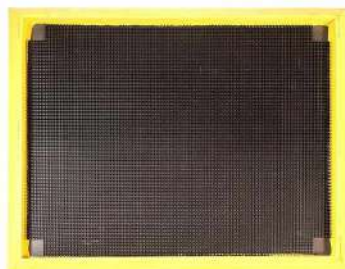


### Disinfection Boot Mat

850mm x 600mm  
L754

+3

Other sizes available on request.



### Sanitising Boot Dip Rubber Mat

Yellow Border for Added Safety  
L7500

800mm x 1000mm by 47mm high.  
\*Disinfectant solution not included



### Doorstrip

Alloy Back  
1.5m Length

55mm Trim: 51808  
75mm Trim: 51807  
105mm Trim: 51806



### Doorstrip

Alloy Back  
1.5m Length  
51800

140mm Trim: 51802  
170mm Trim: 51800



### Doorstrip -

Plastic Back 100mm  
1.2m Length  
51818





**Vehicle Wash Brush Dual Surface**  
Nylex Bristles  
\*Only Fits Handles On This Page  
71602

+2



**Vehicle Wash Brush Dual Surface Deluxe**  
Nylex Bristles  
\*Only Fits Handles On This Page  
71606

+2



**Truck Wash Brush 355mm**  
Nylex Bristles  
\*Only Fits Handles On This Page  
73114

+2



**Truck Wash Brush 610mm**  
Nylex Bristles  
\*Only Fits Handles On This Page  
73124

+2



**Hand Brush Gong Type**  
Nylex Bristles  
73505

+2



**Car Brush Hand Held Waterfed**  
Black and Grey Bristle  
Fits Gardena Hose Fitting  
71712

+2



**Handle Standard Aluminum**  
1350mm x 25mm  
Alloy Thread  
\*Only Fits Wash Brushes On This Page  
92501

+2 +3 +4 +5 +6



**Handle Standard Aluminum**  
1800mm x 25mm  
Alloy Thread  
\*Only Fits Wash Brushes On This Page  
92451

+2 +3 +4 +5 +6



**Handle Telescopic Waterfed**  
Orange  
Fits Gardena Hose Fitting  
1800-3600 2 Stage Heavy Duty Piping  
\*Only Fits Wash Brushes On This Page  
93232

+7





**Window Washing Plastic T-Bar**  
350mm wide  
30028

+3



**Window Washing Plastic T-Bar**  
550mm wide  
63206

+9



**Window Sleeve For Plastic T-Bar**  
350mm wide  
30024

+5



**Window Sleeve For Plastic T-Bar**  
550mm Wide  
63207

+5



**Window Squeegee Blue**  
350mm Wide  
30060

+3



**Bucket Oblong**  
11L Blue  
3940

+2 +3 +4 +6



**Window Cleaning Kit**  
Includes 350mm Washer, Squeegee,  
Cloth and Bucket  
30138

+3



**Handle Telescopic Non-Waterfed**  
Blue  
2000-4000 2 Stage  
93213

\*Only fits Window Washer Plastic T-bar & Squeegee

+3



**Microfibre Cloth**  
Blue  
400x360mm  
H350

+3 +4 +7 +8  
134° 79° -18° PP PBT

Food Safety Documentation Available:  
[www.hillbrush.com](http://www.hillbrush.com). Using Keyword: MFC210

# Chemicals and Aerosols



Our range of chemicals has been designed to suit various environments and applications with the goal to clean, sanitise, enhance, protect and improve your facilities.

**CLEAN** with detergents, degreasers, acid and alkaline cleaners and foamers. Clean In Place (CIP) low foaming formulations in both powders and liquid forms.

**SANITISE** with chlorine and chlorine dioxide, quat and peroxide based disinfectants. Products for fogging and break sanitising.

**ENHANCE** appearance through truck/car washes, hard surface cleaners and specialty metal cleaners and slip release agents.

**PROTECT** with acid based rust inhibitors, hook oils and fuel additives.

**IMPROVE** processes through antifoam preparations, scale removers, iron removal using chlorine dioxide as well as water based ink and anilox roll cleaners.



**Sanitiser**  
**Supermix 1**  
**5L**

**Size:** 5L  
**Code:** 40804

A food grade sanitiser for use in food preparation, post production and storage areas of food processing plants, cafés and restaurants. Packaging may differ.



**All Purpose Cleaner / Sanitiser**  
**Supermix 2**  
**5L**

**Size:** 5L  
**Code:** 40803

A high-quality cleaner-sanitiser formulated for use in kitchen food prep areas, butcheries and storage areas - it can also be used for general purpose cleaning or sink washing. Packaging may differ.



**Heavy Duty Cleaner / Degreaser**  
**Supermix 3**  
**5L**

**Size:** 5L  
**Code:** 40835

A heavy duty alkaline cleaner for removing grease and carbon from around cook tops, fryers and range hoods. Packaging may differ.



### Floor & Hard Surface Cleaner

#### Supermix 4

5L

**Size:** 5L  
**Code:** 40836

Heavy duty floor cleaner for removal of fat and grease in food processing areas - can also be used as a spray & wipe on good quality painted surfaces. Packaging may differ.



### Window Cleaner

#### Supermix 5

5L

**Size:** 5L  
**Code:** 40811

A highly concentrated glass, mirror and window cleaner. Packaging may differ.



### All Purpose Detergent / Sink Wash

#### Supermix 6

5L / 20L Packs

**Size:** 5L  
**Code:** 40807

Phosphate free and highly concentrated, Supermix 6 is formulated especially for dishwashing but can also be used as a floor cleaner and general purpose cleaner. Packaging may differ.



### Chlorinated Foam Cleaner

#### Supermix 7

5L

**Size:** 5L  
**Code:** 40810

A chlorinated foam detergent/sanitiser for use in abattoirs, food related operations and washrooms, suitable for removing greasy soils from floors, walls, benches and cooking equipment. Packaging may differ.



### Rinse Additive

#### Supermix 8

5L

**Size:** 5L  
**Code:** 40814

Rinse aid and drying agent used in the final rinse cycle preventing water spotting and streaking on crockery, dishes, cutlery and glassware. Packaging may differ.



### Non-Hazardous Machine Detergent

#### Supermix 10

5L

**Size:** 5L  
**Code:** 40823

Designed for use in commercial dishwashers for all crockery, glassware and cutlery, Supermix 10 can be used in soft and hard water areas. Packaging may differ.



### Clear Blu Foaming Hand Soap

5L

**Size:** 5L  
**Code:** 40808

Effective cleaning action for high traffic areas. Removes dirt from hands with moisturising properties leaving skin soft and supple.



### True Grit Hand Cleaner

2L

**Size:** 2L  
**Code:** 40821

Pumice based heavy duty hand cleaner for removal of automotive grease, ink, carbon and heavy soiling on hands.



### Air Sanitiser

500ml

**Size:** 500ml  
**Code:** 40827





No food safety  
documentation  
available.

### Hygiene Broom (Soft)

Soft Nylon Fill

1350 x 25mm Alloy Handle.

Available in 6 colours: **Blue**, **Red**, **Green**,  
**Yellow**, **White**, **Orange** and **Purple**.

Size:	350mm	450mm	600mm
Code:	70508	70550	70592

Soft bristle ideal for sweeping smooth dry surfaces. Coloured coded for non compliant hygiene environments. For compliant hygiene equipment please see our Hillbrush range.



No food safety  
documentation  
available.

### Hygiene Broom (Medium)

Medium Nylon Fill

1350 x 25mm Alloy Handle.

Available in 6 colours: **Blue**, **Red**, **Green**,  
**Yellow**, **White**, **Orange** and **Purple**.

Colour:	350mm	450mm	600mm
Code:	70522	70564	70606

Medium fill ideal for sweeping debris or wet floors. Coloured coded for non compliant hygiene environments. For compliant hygiene equipment please see our Hillbrush range.



No food safety  
documentation  
available.

### Deck Scrub (200mm)

Stiff Polyester Fill

1350 x 25mm Alloy Handle.

General Scrubbing.

Colour:	Blu	R	G	Y	W
Code:	73111	71209	72107	71106	71109

Filled in a firm polyester fibre and ideal for cleaning and scrubbing floors, decks and tanks.



No food safety  
documentation  
available.

### Deck Scrub (280mm)

Stiff Polyester Fill

1350 x 25mm Alloy Handle.

General Scrubbing.

Colour:	Blu	R	G	Y	W
Code:	71123	71120	71122	71124	71110

Slightly wider for larger areas. Filled in a firm polyester fibre and ideal for cleaning and scrubbing floors, decks and tanks.



No food safety  
documentation  
available.

### Deck Scrub (Softer Fill)

Light Blue Medium Polyester Fill

1350 x 25mm Alloy Handle.

General Scrubbing.

Size:	200mm	280mm
Code:	73110	73107

Filled in a medium soft polyester fibre and ideal for cleaning and scrubbing floors, decks and tanks that don't require heavy scouring.



No food safety  
documentation  
available.

### Gong Brush

Stiff Polyester Fill

General Cleaning.

Colour:	Blu	R	G	Y	W
Code:	73510	73509	73511	73512	73508

Filled in coloured polyester with a short plastic white handle. Ideal for use in hot water.



No food safety  
documentation  
available.

### Gong Brush Long handle

Stiff Polyester Fill

General Cleaning.

Colour:	Blu	R	G	Y	W
Code:	73516	73517	73515	73519	73518

Filled in coloured polyester with a long plastic white handle for better reach. Ideal for use in hot water.



No food safety  
documentation  
available.

### Hand Scrub 200mm (Java)

Stiff Natural Fibre Fill

General Scrubbing.

Fill:	Java
Code:	70308

An ergonomic hand brush with natural Java fibre perfectly suited for greasy surface.



No food safety  
documentation  
available.

### Hand & Nail Scrub

Blue Stiff Poly Fill

Medium Duty Scrubbing.

Style:	Blu
Code:	12301

A utility nail brush on a short handle. Also useful for detail cleaning. Available in Red, Yellow, Green, Blue and White.



No food safety  
documentation  
available.

**Squeegee Wipe and Dry**  
**Double Blade Foam Fill**  
1350 x 25mm Alloy Handle

Size:	455mm	550mm	750mm
Code:	20019	20022	20031

Available with wooden handle on request.



No food safety  
documentation  
available.

**Squeegee Curved - 5mm Rubber**  
**Alloy Frame with rubber fill**  
1500 x 25mm Plastic Coated Handle

Size:	600mm	750mm
Code:	20424	20430



No food safety  
documentation  
available.

**Squeegee Straight - 5mm Rubber**  
**Alloy Frame with rubber fill**  
1500 x 25mm Plastic Coated Handle

Size:	450mm
Code:	20418



No food safety  
documentation  
available.

**Lobby Pan - Colour Coded**  
**90cm Lobby Pan**  
300 x 280 x 150mm Bucket

Size:	Blu	R	G	Blk	Y
Code:	80293	80294	80292	80299	80296



No food safety  
documentation  
available.

**Brush & Pan Set**  
**Multiple Colour Options**  
Plastic Handheld Brush and Plastic Pan

Colour:	Blu	R	G	Blk	O
Code:	80253	80254	80252	80259	80257
	Y				
	80256				

Quality plastic back brush with poly fill accompanied with pan to make a set.



Chemical	Concentration	Nylon 6	Nylon 66	Polyester PBT	Polypropylene
Acetic Acid	100%	<div><div></div></div>	<div><div></div></div>	<div><div></div></div>	<div><div></div></div>
Acetone	100%	<div><div></div></div>	<div><div></div></div>	<div><div></div></div>	<div><div></div></div>
Ammonia Liquid	-	<div><div></div></div>	<div><div></div></div>	<div><div></div></div>	<div><div></div></div>
Aniline	100%	<div><div></div></div>	<div><div></div></div>	<div><div></div></div>	<div><div></div></div>
Benzene	100%	<div><div></div></div>	<div><div></div></div>	<div><div></div></div>	<div><div></div></div>
Bleaching Solutions Dilute	-	<div><div></div></div>	<div><div></div></div>	<div><div></div></div>	<div><div></div></div>
Caustic Potash	50%	<div><div></div></div>	<div><div></div></div>	<div><div></div></div>	<div><div></div></div>
Caustic Potash	10%	<div><div></div></div>	<div><div></div></div>	<div><div></div></div>	<div><div></div></div>
Chlorine Water Saturated	-	<div><div></div></div>	<div><div></div></div>	<div><div></div></div>	<div><div></div></div>
Chloroform	100%	<div><div></div></div>	<div><div></div></div>	<div><div></div></div>	<div><div></div></div>
Chromic Acid	10%	<div><div></div></div>	<div><div></div></div>	<div><div></div></div>	<div><div></div></div>
Citric Acid	10%	<div><div></div></div>	<div><div></div></div>	<div><div></div></div>	<div><div></div></div>
Detergent Soaps	-	<div><div></div></div>	<div><div></div></div>	<div><div></div></div>	<div><div></div></div>
Ethanol	96%	<div><div></div></div>	<div><div></div></div>	<div><div></div></div>	<div><div></div></div>
Ethylacetate	100%	<div><div></div></div>	<div><div></div></div>	<div><div></div></div>	<div><div></div></div>
Formic Acid	98%	<div><div></div></div>	<div><div></div></div>	<div><div></div></div>	<div><div></div></div>
Fuel Oil	-	<div><div></div></div>	<div><div></div></div>	<div><div></div></div>	<div><div></div></div>
Glycerin	-	<div><div></div></div>	<div><div></div></div>	<div><div></div></div>	<div><div></div></div>
Hydrochloric Acid	30%	<div><div></div></div>	<div><div></div></div>	<div><div></div></div>	<div><div></div></div>
Lactic Acid	20%	<div><div></div></div>	<div><div></div></div>	<div><div></div></div>	<div><div></div></div>
Methyl Alcohol	100%	<div><div></div></div>	<div><div></div></div>	<div><div></div></div>	<div><div></div></div>
Mineral Oil	-	<div><div></div></div>	<div><div></div></div>	<div><div></div></div>	<div><div></div></div>
Nitric Acid	10%	<div><div></div></div>	<div><div></div></div>	<div><div></div></div>	<div><div></div></div>
Nitric Acid	50%	<div><div></div></div>	<div><div></div></div>	<div><div></div></div>	<div><div></div></div>
Oleic Acid	100%	<div><div></div></div>	<div><div></div></div>	<div><div></div></div>	<div><div></div></div>
Oxalic Acid	10%	<div><div></div></div>	<div><div></div></div>	<div><div></div></div>	<div><div></div></div>
Petrol	-	<div><div></div></div>	<div><div></div></div>	<div><div></div></div>	<div><div></div></div>
Phosphoric Acid	85%	<div><div></div></div>	<div><div></div></div>	<div><div></div></div>	<div><div></div></div>
Sea Water	-	<div><div></div></div>	<div><div></div></div>	<div><div></div></div>	<div><div></div></div>
Sodium Chloride	-	<div><div></div></div>	<div><div></div></div>	<div><div></div></div>	<div><div></div></div>
Sodium Hydroxide	10%	<div><div></div></div>	<div><div></div></div>	<div><div></div></div>	<div><div></div></div>
Sodium Hydroxide	50%	<div><div></div></div>	<div><div></div></div>	<div><div></div></div>	<div><div></div></div>
Sodium Hypochloride	10%	<div><div></div></div>	<div><div></div></div>	<div><div></div></div>	<div><div></div></div>
Stearic Acid	100%	<div><div></div></div>	<div><div></div></div>	<div><div></div></div>	<div><div></div></div>
Sulphuric Acid	10%	<div><div></div></div>	<div><div></div></div>	<div><div></div></div>	<div><div></div></div>
Sulphuric Acid	100%	<div><div></div></div>	<div><div></div></div>	<div><div></div></div>	<div><div></div></div>
Tetrachloroethylene	-	<div><div></div></div>	<div><div></div></div>	<div><div></div></div>	<div><div></div></div>
Toluene	100%	<div><div></div></div>	<div><div></div></div>	<div><div></div></div>	<div><div></div></div>
Trichloroethylene	-	<div><div></div></div>	<div><div></div></div>	<div><div></div></div>	<div><div></div></div>
Turpentine	100%	<div><div></div></div>	<div><div></div></div>	<div><div></div></div>	<div><div></div></div>
Vaseline	-	<div><div></div></div>	<div><div></div></div>	<div><div></div></div>	<div><div></div></div>
Vegatable Oil	-	<div><div></div></div>	<div><div></div></div>	<div><div></div></div>	<div><div></div></div>

**Tolerance Ratings**

Good	Fair	Poor	Do Not Use
<div><div></div></div>	<div><div></div></div>	<div><div></div></div>	<div><div></div></div>



Properties	Unit of Measure	Nylon 6	Nylon 66	Polyester PBT	Polypropylene
<b>Specific Gravity</b>	-	<b>1.14</b>	<b>1.14</b>	<b>1.34</b>	<b>0.91</b>
<b>Melting Point</b>	°C	<b>220</b>	<b>255</b>	<b>255</b>	<b>168</b>
<b>Maximum Working Temp</b>	°C	<b>100-120</b>	<b>100-120</b>	<b>120</b>	<b>70</b>
<b>Moisture Absorption</b>	%	<b>3</b>	<b>2.8</b>	<b>0.30</b>	<b>0.00</b>
<b>Water Absorption</b>	%	<b>9.5</b>	<b>8.5</b>	<b>0.5</b>	<b>0.01</b>
<b>Tensile Strength (Dry)</b>	N/mm2	<b>80</b>	<b>85</b>	<b>36</b>	<b>55</b>
<b>Loss of Stiffness (Wet)</b>	%	<b>70/80</b>	<b>50/60</b>	<b>1.2</b>	<b>1.2</b>
<b>Abrasion Resistance</b>	-	-	-	-	-
<b>Bend Recovery</b>	-	-	-	-	-
<b>Toxicity</b>	-	<b>NONE</b>	<b>NONE</b>	<b>NONE</b>	<b>NONE</b>
<b>Swelling in Water</b>	%	<b>2</b>	<b>2</b>	<b>0</b>	<b>0</b>



# NEW ZEALAND BRUSH CO

INNOVATIVE BRUSHWARE SINCE 1886

## DUNEDIN

4 Otaki Street | PO Box 1174 | Dunedin  
**P:** 03 456 4400 | **E:** sales@nzbrush.co.nz

## CHRISTCHURCH

52 Essex Street, Phillipstown | PO Box 22-218 | Christchurch  
**P:** 03 366 4928 | **E:** christchurch@nzbrush.co.nz

## PALMERSTON NORTH

21 Downing Street, Takaro | Palmerston North  
**P:** 021 955 481 | **E:** sales@nzbrush.co.nz

## AUCKLAND

305B Neilson Street, Onehunga | PO Box 13400 | Auckland  
**P:** 09 622 0722 | **E:** auckland@nzbrush.co.nz

email: sales@nzbrush.co.nz

# 0800 692 787

---

[www.nzbrush.co.nz](http://www.nzbrush.co.nz)